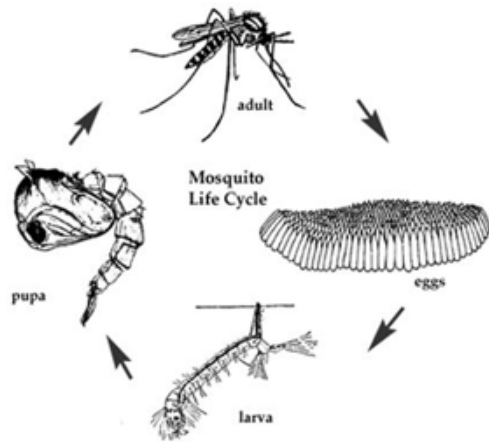


## MOSQUITO LIFE CYCLE

---



Mosquitoes have four stages of development— egg, larva, pupa and adult. They spend their larval and pupal stages in water. Female mosquitoes deposit eggs on moist surfaces such as mud or fallen leaves or as egg rafts on the surface of the water. Mosquitoes take approximately one week to develop from egg to adult. In the heat of the summer it may take only 5 days. Only adult female mosquitoes bite, they need the protein in the blood to nourish their eggs. Male adult mosquitoes feed on plant nectar and die shortly after mating. The average life expectancy for an adult mosquito is four to six weeks.



If mosquitoes present a problem in your area or if you have a standing water concern, contact our Commission office. The area of the complaint will be searched to locate the mosquito habitat or water source and will be inspected to verify the presence of adult mosquitoes. We strive to respond to calls within 24-48 hours.

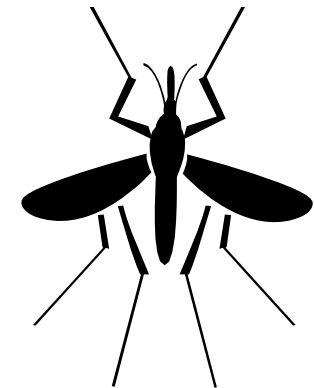
**908-453-3585**

WARREN COUNTY MOSQUITO COMMISSION  
NEW JERSEY

WARREN COUNTY  
MOSQUITO COMMISSION  
NEW JERSEY

---

MOSQUITOES...  
WHAT EVERYONE  
SHOULD KNOW



PO Box 388  
2 Furnace Street  
Oxford, NJ 07863  
908-453-3585

---

[www.warrencountymosquito.org](http://www.warrencountymosquito.org)

# MOSQUITOES...WHAT EVERYONE SHOULD KNOW

## WHAT YOU CAN DO

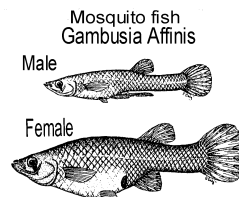


Residents can help provide mosquito control in their neighborhoods by eliminating standing water around their homes. Any container holding water is potential mosquito habitat. To help reduce mosquito populations and exposure to mosquitoes:

- Recycle tires.
- Clean gutters regularly.
- Change water in pet dishes and bird baths every few days.
- Empty all containers holding water.
- Turn over wading pools & wheelbarrows when not in use.
- Treat swimming pools & keep pool covers free of standing water & debris.
- Make sure doors & windows have screens.
- Use mosquito repellent according to package directions.
- Report wet areas and adult mosquito problems to your local mosquito control agency.

## WHAT WE DO

Our control efforts focus primarily on the immature water borne stages of the mosquito. It is much more effective to control the immature stages of the mosquito. The primary insecticide used is a bacterial larvicide, specific to mosquito larvae. Pesticide applications comply with the recommendations made by Rutgers University and the regulations set by the NJ Department of Environmental Protection. The Commission stocks *Gambusia affinis*, the mosquitofish, as well as Fathead Minnows and Banded Killifish to control the waterborne stages of mosquitoes. These fish are raised by the NJ Division of Fish & Wildlife as part of the State Mosquito Control Commission's bio-control program. The Commission has over 1,000 sites in the county which are inspected on a weekly basis during "mosquito season". Adult mosquitoes are collected and tested for mosquito borne viruses. We also take complaint calls and strive to respond to those calls within 24-48 hours. The Commission conducts water management/source reduction projects year round by eliminating standing water by hand or with the use of heavy equipment. Our Public Education Program is essential to increase awareness and to encourage assistance in eliminating mosquito breeding sources. As a final line of defense, a ultra low volume truck mounted sprayer may be used to control adult mosquitoes when significant adult mosquito populations exist.



(Maximum size: females: 2.5 inches, males: 1.25 inches)

## WINTER ACTIVITIES

Mosquito control does not end when the mosquitoes stop flying, it continues year around. Seasonal control operations start in February with the hatching of snowpool mosquito species and continue into October, until a killing frost. Water Management activities continue year round. During the winter permits for these projects are pursued. Potential water management projects are accessed. Record keeping for the season's mosquito activity is completed. Inspection routes are revised, if needed. Sites are evaluated for possible fish stocking. Sites that are hard to access in the summer due to heavy vegetation are cleared of brush. Drainage structures are cleared of leaves and debris. Equipment maintenance is performed. Educational presentations are given at schools in the County to 4th & 5th grade students. Planning and preparation for the next year takes place.

## MOSQUITO BORNE-DISEASE

- Dog Heartworm
- West Nile Virus
- La Crosse Encephalitis
- Eastern Equine Encephalitis

These are just some of the diseases that can be transmitted by the bite if an infected mosquito. Surveillance for disease is performed by our Commission for detection before human cases occur.